



Removing and Changing the Cable

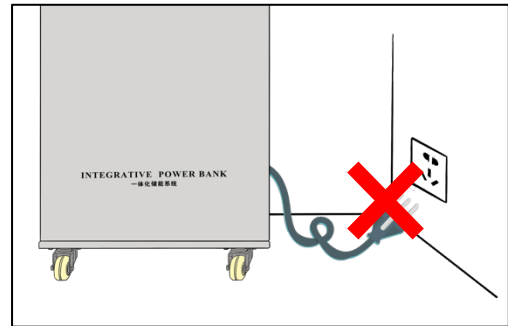
CONCENPOWER INTEGRATIVE POWER BANK

Removing and Changing the Cable

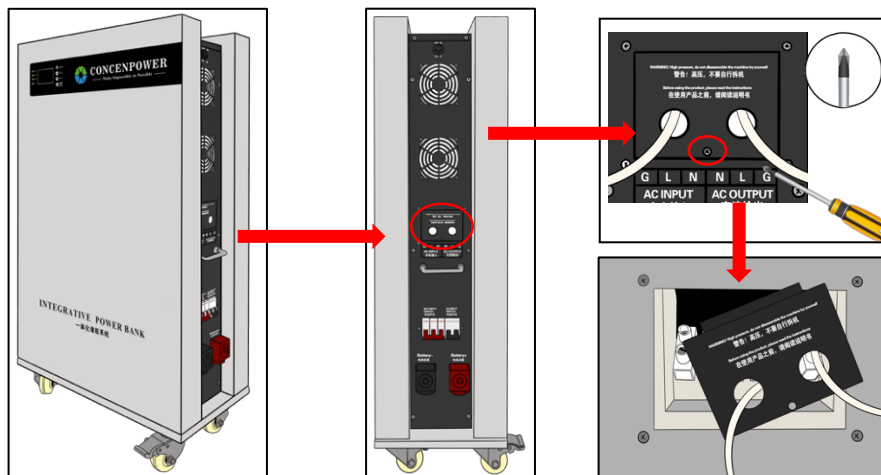
Remove and change AC input and AC output (AC end is on the left side of the product. Please see the product indication clearly)

[Step 1]: Turn off all switches of the product shown in the picture and disconnect the link between AC input cable and the fixed jack in wall

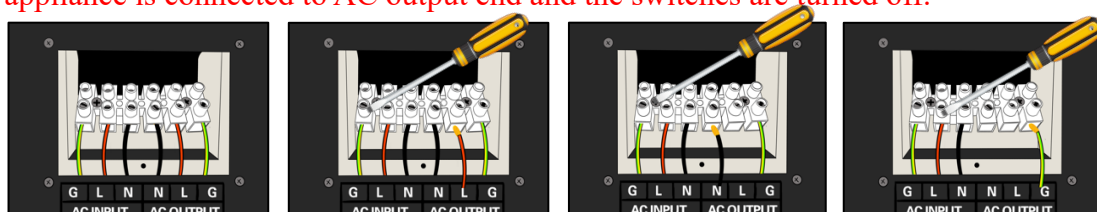
Check list of turning off switches	
Please click before the switch you've turned off	
	PV switch
	AC switch
	BAT switch
	Total On-Off
Please make sure all switches are turned off before moving to the next step.	



[Step 2]: Use the Frearson screwdriver to counterclockwise loosen the screw under the cover (shown in the red circle) and remove the cover. (Shown in the position in the figure) (Please keep the screws and covers that have been screwed off properly, which you will use in subsequent operations)

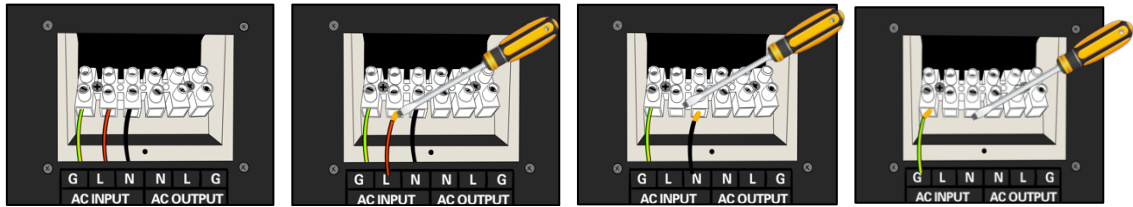


[Step 3]: Please correctly identify the indications in the product. Then, loosen the screws above the wiring holes counterclockwise using a slot screwdriver and pull out the wire and tighten the screw clockwise in order of L, N and G. **Please turn off all electrical appliances connected to AC output end before operation, ensure no electrical appliance is connected to AC output end and the switches are turned off.**

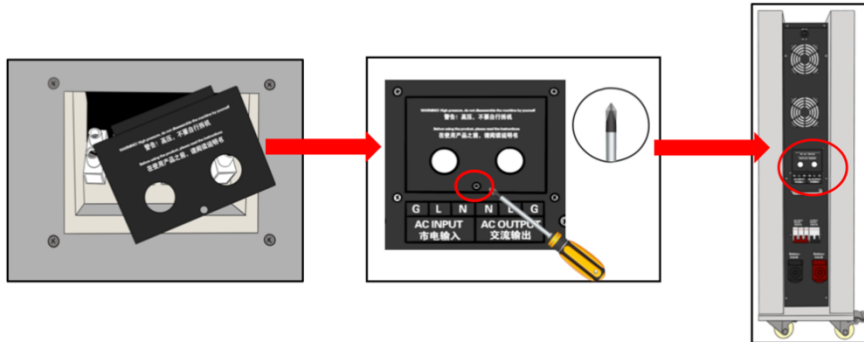


[Step 4]: Please remove the AC input cable connected to the product and tighten the screws clockwise based on the operation of [Step 3] in order of L, N and G again.

(Please disconnect the AC input cable from the fixed jack in the wall before operation)



[Step 5]: Prepare the cover and screw removed in [Step 2]. Please put the cover in the position of Picture 2 in [Step 2] and tighten the screws clockwise with a club screwdriver.



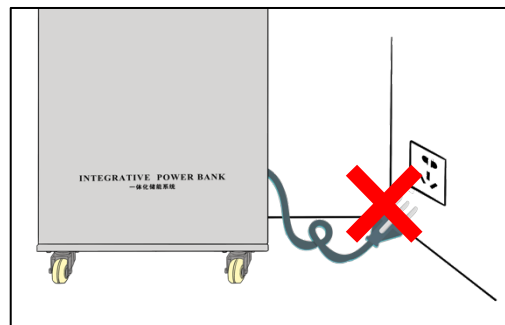
[Step 6]: AC output cable and AC input cable have been removed. Please keep your tools well. Please refer to the installation instruction for installing. Please keep all switches off and continue to follow instructions if you want to remove solar panels.

Remove and change solar input (On the right side is the solar input. Please see the product indications clearly)

Please ensure all switches are turned off again before operation and please prepare electricity insulation tape.

[Step 1]: Turn off all switches of the product shown in the picture and disconnect the link between AC input cable and the fixed jack in wall.

Check list of turning off switches	
Please click before the switch you've turned off	
	PV switch
	AC switch
	BAT switch
	Total On-Off
Please make sure all switches are turned off before moving to the next step.	

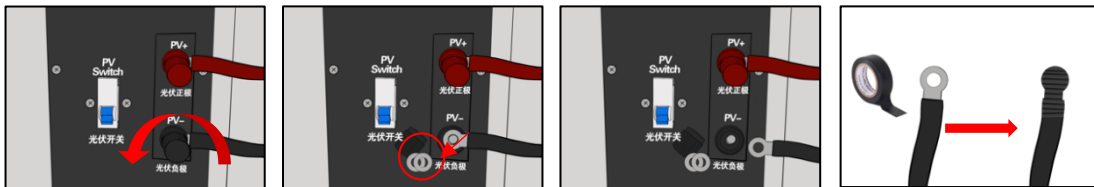


[Step 2]: Please turn off the solar panel switch and observe the screen, making sure the solar input current is 0.00a until the solar input connection signal is off. (refer to the subsequent "Screen Details")

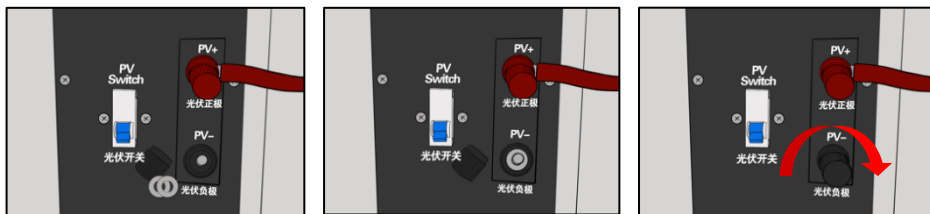


[Step 3]: Please make sure to remove the PV+ and PV- in order (the black negative first followed by red positive) and ensure electricity insulation measures are in place after removing the positive and negative pole of solar panel.

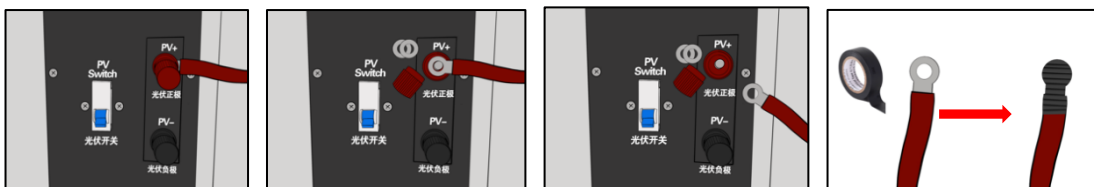
Please make sure solar switch is turned off before operation. Please unscrew the black nut of the PV- counterclockwise and remove the two ring-type gaskets as shown in the picture. Then, please pinch the PVC line of the PV- cable of the solar panel (it is prohibited to directly touch the solar junction post and the metal sheet of solar panel cable). Remove the PV- cable of the solar panel and ensure insulation measures are ready (it is suggested you completely wrap the metal parts of the PV- cable with insulation tape).



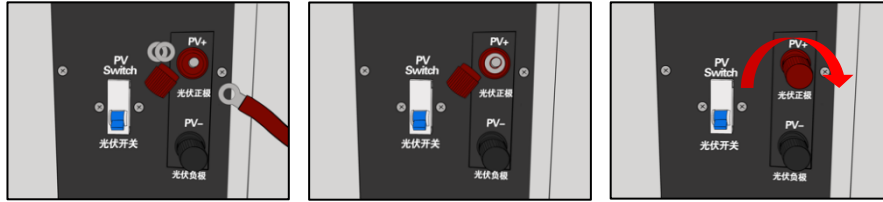
[Step 4]: Please ensure two ring gaskets removed in [Step 3] are put on the PV- stud of the solar panel and fasten the removed black nut clockwise on the negative stud of the solar panel.



[Step 5]: Please make sure solar switches are turned off before operation. Please unscrew the red nut of the PV+ counterclockwise and remove the two ring gaskets as shown in the picture. Then, please pinch the PVC line of the PV- cable of the solar panel, **(it is prohibited to directly touch the solar junction post and the metal sheet of solar panel cable)**, remove the PV+ of the solar panel and take insulation measures (it is suggested you wrap the metal sheet of the negative connector wire of the solar panel with insulation tape). (Please keep the removed nuts and gaskets properly which may be used in your subsequent operations).



[Step 6]: Please ensure two ring gaskets removed in [Step 5] are put on the PV+ stud of the solar panel and fasten the removed black nut clockwise on the negative stud of the solar pane



[Step 7]: Please make sure the insulation measures are taken for both ends of the cable of the removed solar panel. Please refer to the installation instruction for installing the solar panel again.

* We are not responsible for any safety problem and equipment damage due to non-standard operation.