



# Installation and Operation Manual

# CONCENPOWER INTEGRATIVE POWER BANK

## Installation and Operation Manual

Thanks for choosing our product, to bring you a better experience and safe use of this product, please read the following:

**[Step 1]:** Take out the product and place it in a clean and well-ventilated environment and stay away from water, hazardous gases, and dangerous goods. Notice that the product has vents on both sides and keep the distance from the obstacles greater than 50cm to facilitate the product cooling. Once the position of the product is determined, step on the fixed paddle next to the wheel, lock the wheel and secure the position of the product.

**[Step 2]:** The various connector ports on both sides of the product are clearly marked and should not be wired until they are clearly distinguished. All switches on the product need to be switched off before operating. If you have any problems, please call our technical support department.

Checklist of turning of the switches	
Please click before the switch you've turned off	
	PV switch
	AC switch
	BAT switch
	Total On-Off
<b>Please make sure all switches are turned off before moving to the next step.</b>	

**[Step 3]:** You need to prepare the material according to your needs

Checklist of your own material		
Please tick the box after the material is ready		
	AC inputs connect cable	Determines the distance between the location of your product and the location of the AC mains jack
	AC outputs connect cable	Determines based on the distance and load power of the AC output you need
	Stripping pliers	Depending on the diameter size of your own AC input connect cable and AC output connect cable
	pincers	You'll use in STEP 5 of AC Input and AC Output
The above materials will be used when you operate AC Input and AC Output		

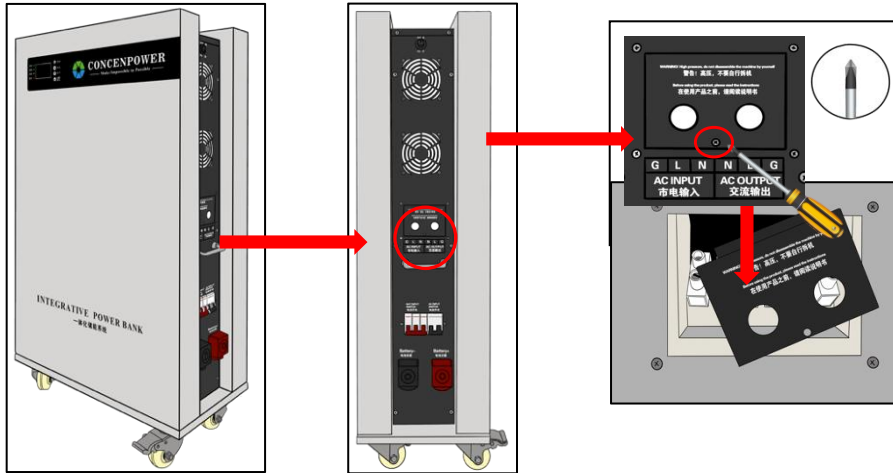
**AC input and AC output (AC modules are located on the left side of the product, observe the product's indication clearly before operation).**

**If your device has been installed with AC input and output, please skip directly to [Step 12]**

**Please reconfirm that all switches are switched off before operation**

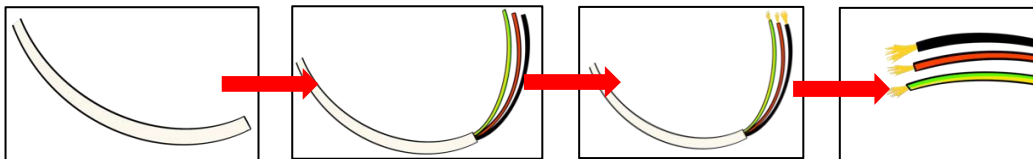
**[Step 1]:** Use the Frearson screwdriver to counterclockwise loosen the screw under the cover (shown in the red circle) and remove the cover. (Shown in the position in

the figure) (Please keep the screws and covers that have been screwed off properly, which you will use in subsequent operations)



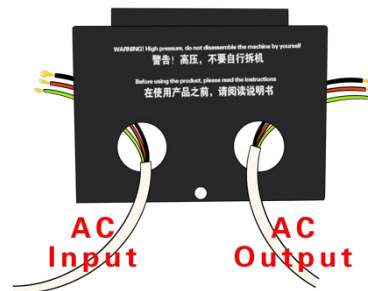
**[Step 2]:** Use stripping pliers to strip the AC input cable and AC output cable to the position shown in the figure below, each connect cable should reveal a copper connect cable about 2cm. (Stripper information please refer to the stripper product manual you purchased.)

There are usually three cables inside your cable. In general, yellow-green indicates ground wire, with the letter G; red for live wire, with the letter L; and black for neutral wire, with the letter N. (For reference only, please distinguish according to local conditions).

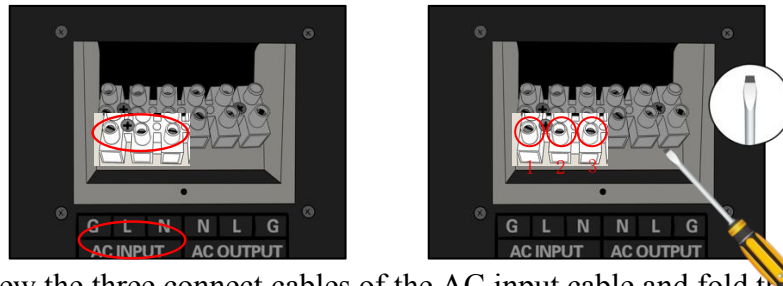


**[Step 3]:** Through the AC input cable to the hole on the right side of the cover and the AC output cable through the hole on the left side of the cover. (Please place it properly, you will use in a subsequent operation).

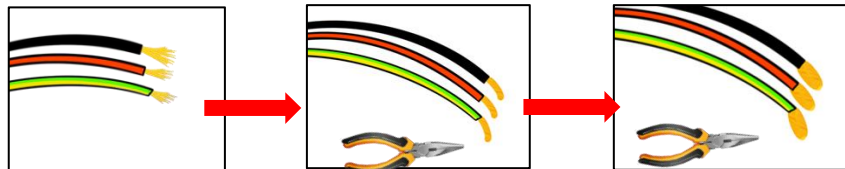
Before you operation, make sure  
that your AC input is powered off  
and not connect to any  
appliances



**[Step 4]:** Use a Slot screwdriver to loosen the screws above the ‘AC input’s G, L, N (as shown in the figure). Loosen and do not remove.

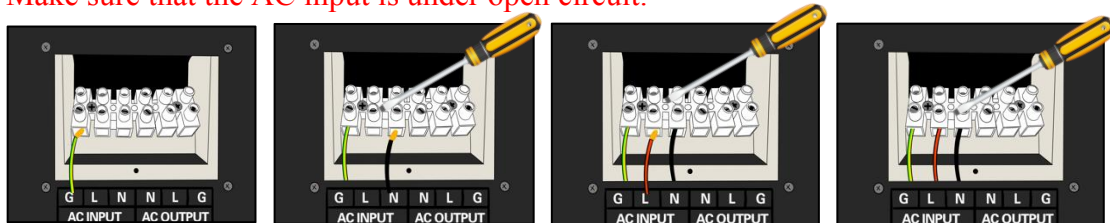


**[Step 5]:** Screw the three connect cables of the AC input cable and fold them back (as shown) (copper connect cable have thrones, wear gloves to operate with pliers).

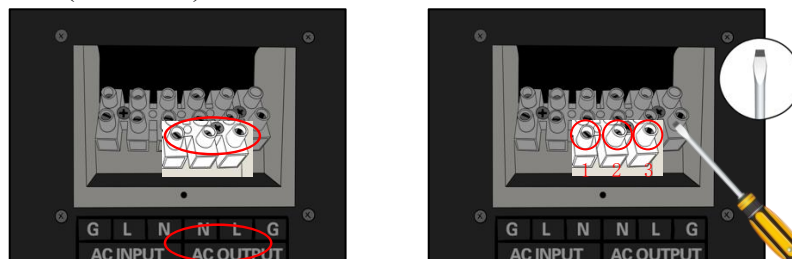


**[Step 6]:** Insert the connect cables prepared in [Step 5] to accurately identify the ground wire, neutral wire, live wire. And insert them into the connector holes below the screws shown in [Step 4] in the G, N, L order, and tighten the screws clockwise.

**Make sure that the AC input is under open circuit.**



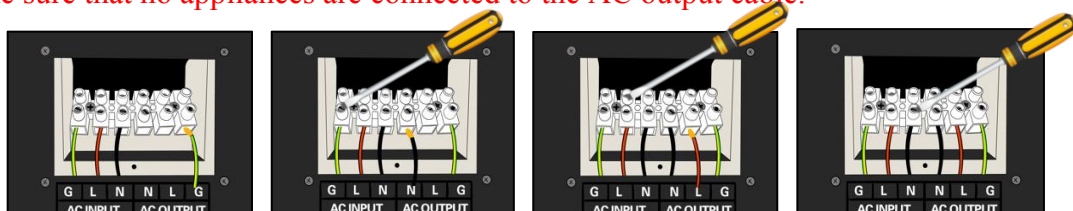
**[Step 7]:** Use a Slot screwdriver to loosen the screws above the AC output shown in counterclockwise (as shown). Loosen and do not remove.



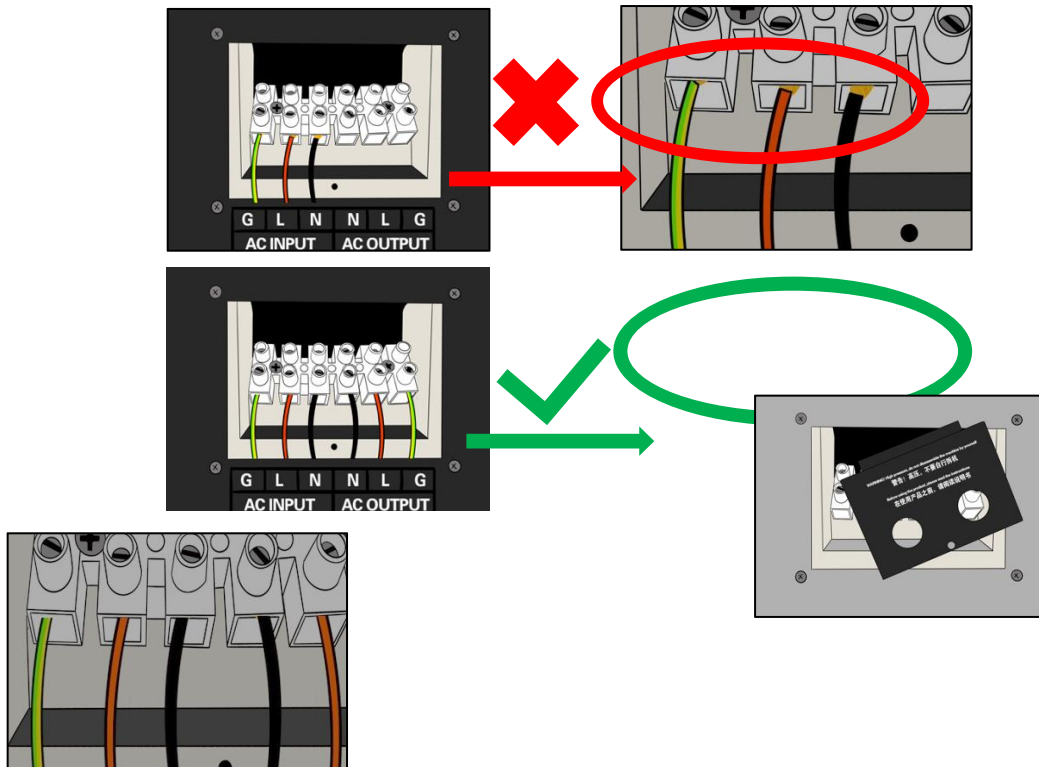
**[Step 8]:** Fold the AC output cable in accordance with Step 5

**[Step 9]:** Insert the connect cable s prepared in [Step 8] to accurately identify the ground wire, neutral wire, live wire. And insert them into the connector holes below the screws shown in [Step 7] in the G, N, L order, and tighten the screws clockwise.

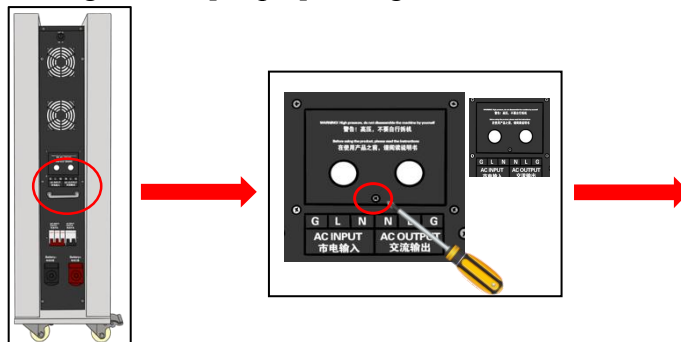
**Make sure that no appliances are connected to the AC output cable.**



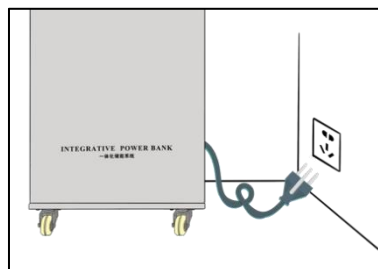
**[Step 10]:** Check whether the connecting cable connected in the above steps is firmly connected and whether the screws have been tightened. Do not expose the copper wire outside the wiring hole to avoid short circuit.



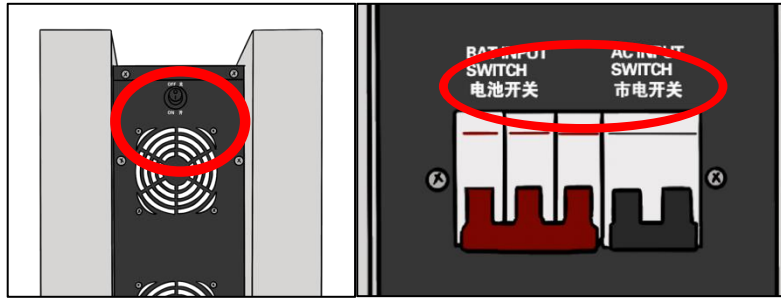
**[Step 11]:** Prepare the covers and screws removed in [Step 1]. Place the cover in the position of Figure 2 of [Step 1] and tighten it clockwise with a Frearson screwdriver.



**[Step 12]:** Insert the AC input cable plug into the wall fixed jack (make sure all switches are off).



**[Step 13]:** Turn on the Total On-Off without a "solar connection". The product makes the first “beep” sound, and after 6 seconds, it makes 4 “beep” sounds continuously. Then turn on the battery switch and the AC switch (shown in the product indications). Observe that the display is displayed correctly (refer to Screen Details). If everything right, it works.

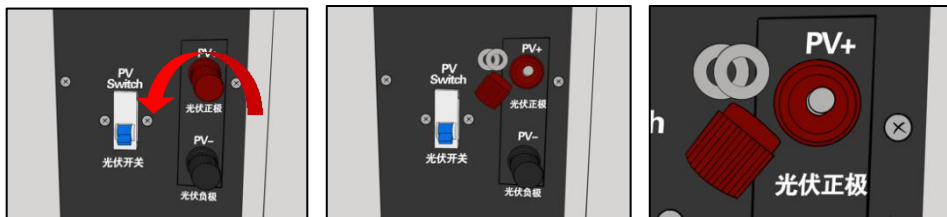


**[Step 14]:** If you need to use AC input, please turn off the TOTAL ON-OFF and keep the BAT switch and AC switch on.

If you need to connect solar panels, make sure that all switches are switched off and continue with reference to the "Solar input" in the Installation and Operation Manual. **Solar input (solar input are located on the right side of the product, observe the product's indication clearly before operation).**

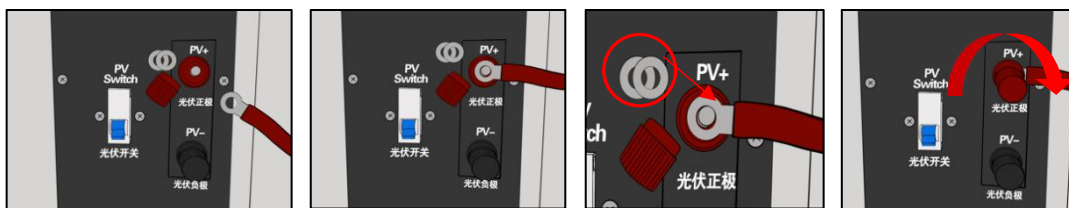
**Please reconfirm that all switches are switched off. Take care not to touch the positive and negative poles of the solar panel.**

**[Step 1]:** Unscrew the red nut of the PV+ counterclockwise and remove the two ring gaskets as shown in the figure. (Please keep the screwed nuts and gaskets properly, which you will use in subsequent operations).



**[Step 2]:** Before operating, please make clear the positive and negative poles of the solar panel cable, the red is positive, and the black is negative.

Put the connecting plate on the positive connection cable of the solar panel into the stud of the PV+ pole shown in the product. Then put the two ring-shaped gaskets removed from [Step 1] on the studs of the solar positive, and tighten the red nut removed from [Step 1] clockwise.

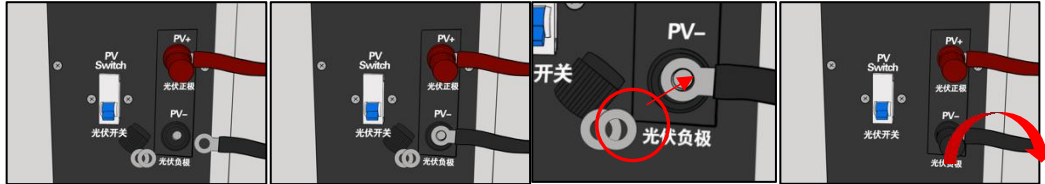


**[Step 3]:** Unscrew the black nut of the PV- counterclockwise and remove the two ring gaskets as shown in the figure. (Please keep the screwed nuts and gaskets properly, which you will use in subsequent operations).

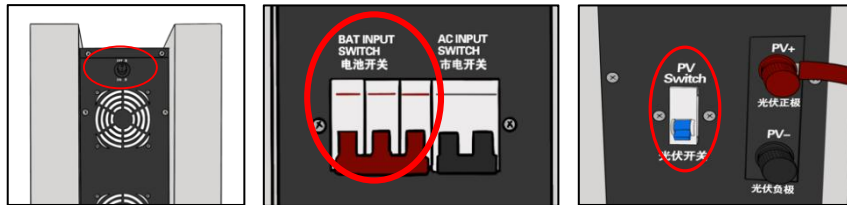


**[Step 4]:** Before the operation, please make clear the positive and negative poles of the solar panel cable, red is positive and black is negative.

Put the connecting piece on the positive connection cable of the solar panel into the stud of the PV- pole shown in the product. Then put the two ring-shaped gaskets removed from [Step 3] on the studs of the solar negative, and tighten the black nut removed from [Step 3] clockwise.



**[Step 5]:** Confirm that the solar panel connect cable is properly connected to the product PV input and place the solar panel in a position with direct sunlight. Turn on the Total On-Off, the battery switch, the solar switch in turn. Observe if the display is working (refer to the subsequent "Screen Details").



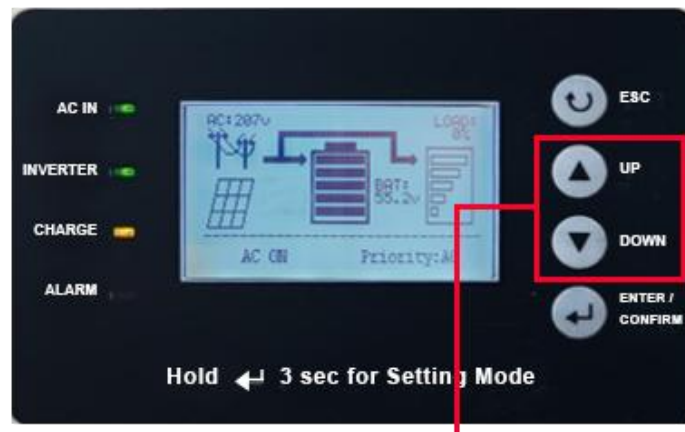
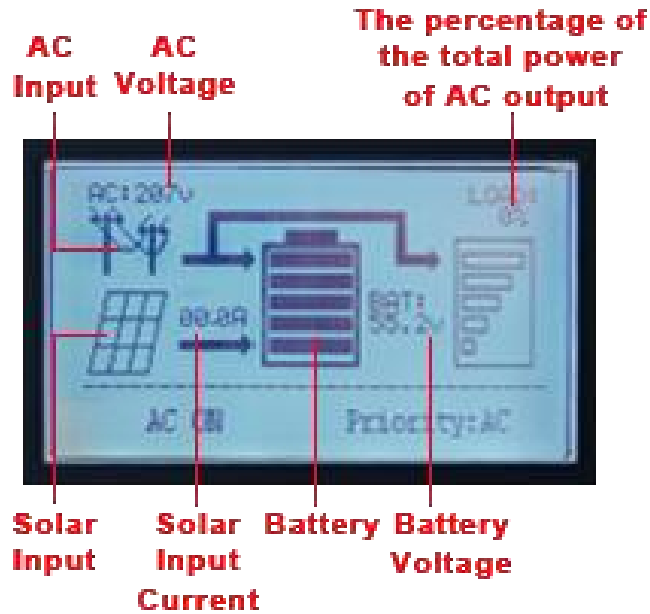
**[Step 6]:** If you need to use Solar input, please turn on the TOTAL ON-OFF and keep the BAT switch on.

**Screen details (the screen is located on the front of the product).**

Turn on the main switch of the product, and the display enters the welcome interface. The product makes the first “beep” sound, and after 6 seconds, it makes 4 “beep” sounds continuously. After 11 seconds, the screen enters the working mode and displays the relevant parameters of the product.

<p>Shut down</p>	<p>Welcome interface</p>	<p>AC input, solar input, AC output</p>
<p>AC input, Solar input, No AC output</p>	<p>Solar inputs, AC output</p>	<p>Solar input, No AC output</p>

AC input, AC output	AC input, No AC output	No AC input, Solar input, AC output



**see more information of the product**

The device parameters have been set before leaving the factory, please do not modify the original parameters without authorization.

if any problems caused by unauthorized modification of parameters, we are not responsible